

Flat 61, 4 Maple Path, London, E5 8FF
£4,000 Per month
EPC Rating: B Council Tax Band: B



Nestled in the heart of London on Maple Path, this exquisite three-bedroom penthouse apartment in the prestigious Parkhaus Development is a true gem. Spanning an impressive 1,001 square feet, this new build, completed in 2023, offers a harmonious blend of luxury and comfort, making it the perfect urban retreat.

As you step into this move-in ready residence, you are greeted by an open-plan living space that exudes modern elegance. The design features clean lines and expansive windows, allowing natural light to flood the interiors while framing stunning views of the city and the adjacent park. The private terrace provides an ideal spot for relaxation or entertaining, enhancing the overall appeal of this remarkable home.

Beyond the residential offerings, Parkhaus fosters a vibrant community with its new 45,000 square foot commercial hub. This dynamic space is set to attract artists, designers, and craftspeople, infusing the area with creative energy and making it a lively place to live and thrive.



Percy House,
33-34 Gresse Street,
London
W1T 1QU
020 7043 8888
Lettings@stone.london

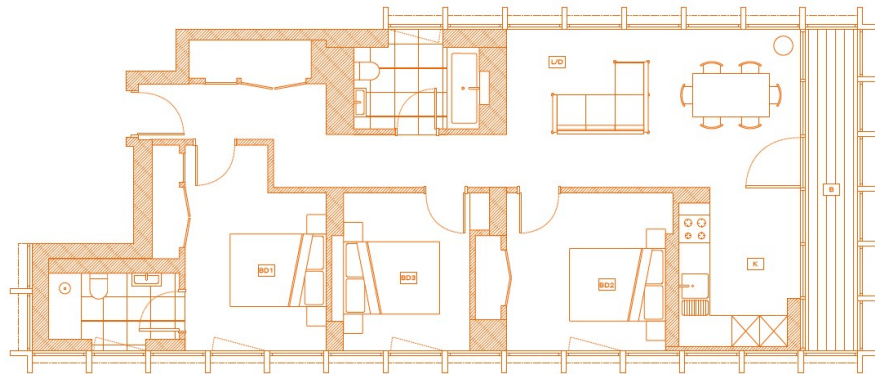
THREE BEDROOMS
APARTMENT: D2.12.G1

LIVING & DINING	6.1m x 3.3m	20' 0" x 10' 10"
KITCHEN	2.6m x 3.3m	8' 6" x 10' 10"
BEDROOM 1	3.6m x 4.2m	11' 8" x 13' 8"
BEDROOM 2	3.5m x 3.3m	11' 6" x 10' 10"
BEDROOM 3	3.0m x 3.3m	9' 10" x 10' 10"
BATHROOM	2.6m x 1.7m	8' 6" x 5' 7"
ENSUITE	2.7m x 1.6m	9' 10" x 5' 3"
BALCONY	1.1m x 6.7m	3' 7" x 22' 0"
TOTAL	95 SQM	1023 SQFT

BLOCK D2

WEST ELEVATION

NOTES



Energy Efficiency Rating		
	Current	Potential
Very energy efficient - lower running costs		
(92 plus) A		
(81-91) B	86	
(69-80) C		
(55-68) D		
(39-54) E		
(21-38) F		
(1-20) G		
Not energy efficient - higher running costs		
England & Wales	EU Directive 2002/91/EC	