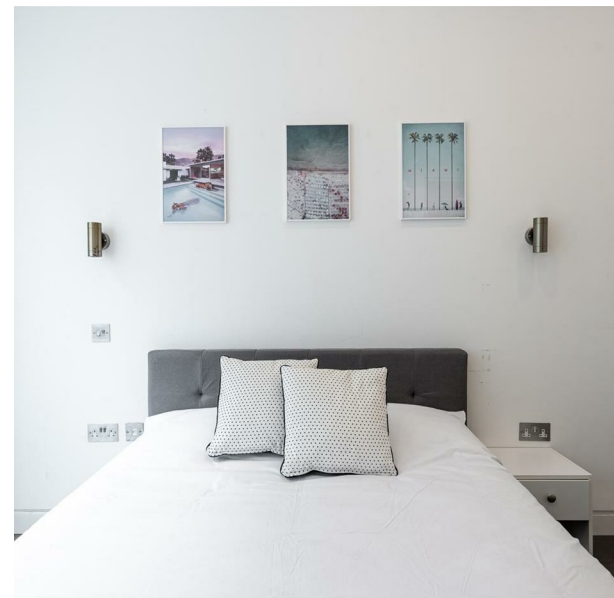
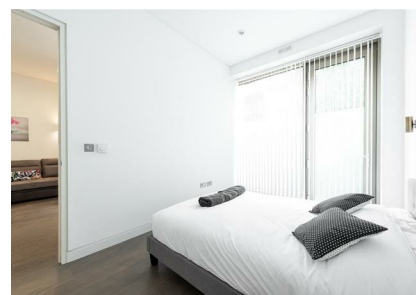


Grange Gardens Haven Way, London, SE1 3FL
£2,100 Per month
EPC Rating: C Council Tax Band: E

STONE



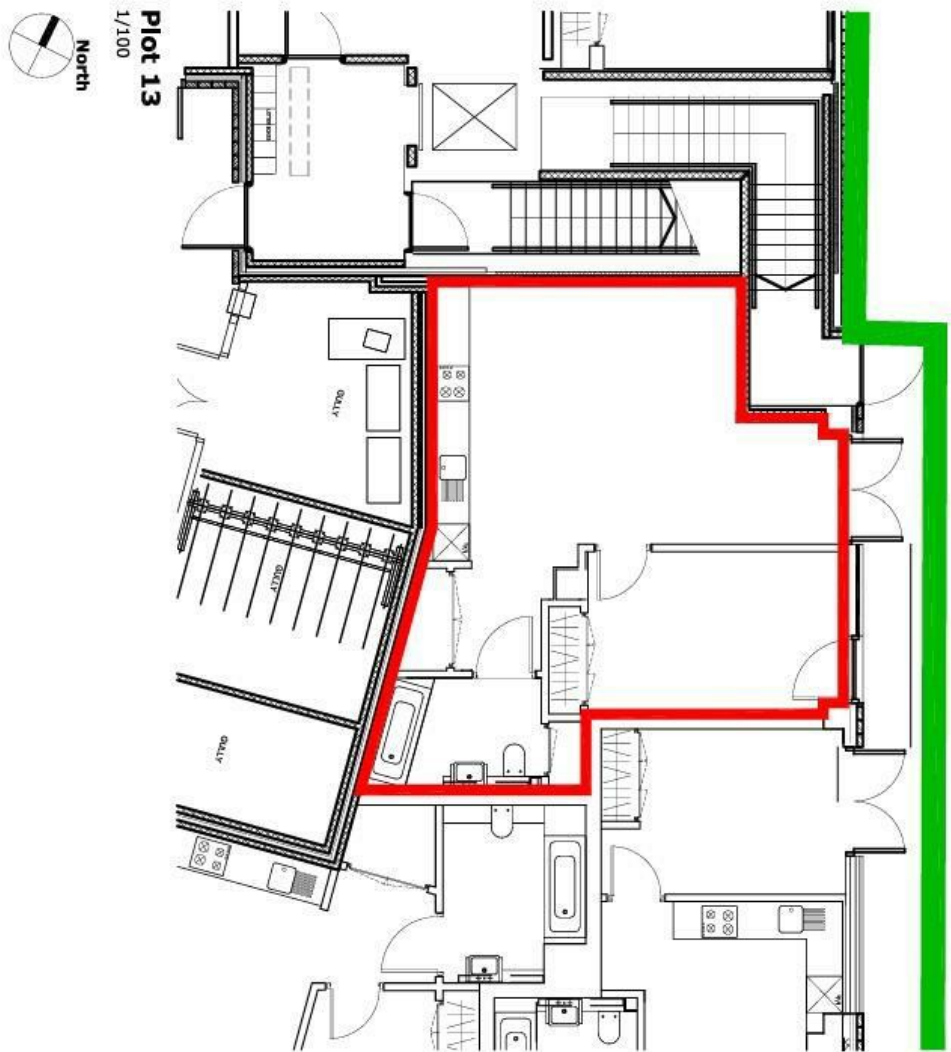
Welcome to this charming ground-level apartment located on Haven Way, London. This modern property offers a comfortable living space, making it an ideal choice for individuals or couples seeking a stylish urban retreat.

As you enter, you will be greeted by a spacious reception room that is bathed in natural light, thanks to the floor-to-ceiling entrance doors entering the living area and bedroom. This feature not only enhances the aesthetic appeal of the living area but also provides easy access for moving furniture in and out, making it a practical choice for those who appreciate convenience.

The apartment boasts one well-proportioned bedroom, which is designed to be a peaceful sanctuary. The glazed windows throughout the property ensure that you can enjoy ample sunlight while maintaining your privacy, creating a warm and inviting atmosphere.



Percy House,
33-34 Gresse Street,
London
W1T 1QU
020 7043 8888
Lettings@stone.london



Energy Efficiency Rating		
	Current	Potential
Very energy efficient - lower running costs		
(92 plus) A		
(81-91) B		
(69-80) C	75	
(55-68) D		
(39-54) E		
(21-38) F		
(1-20) G		
Not energy efficient - higher running costs		
England & Wales	EU Directive 2002/91/EC	