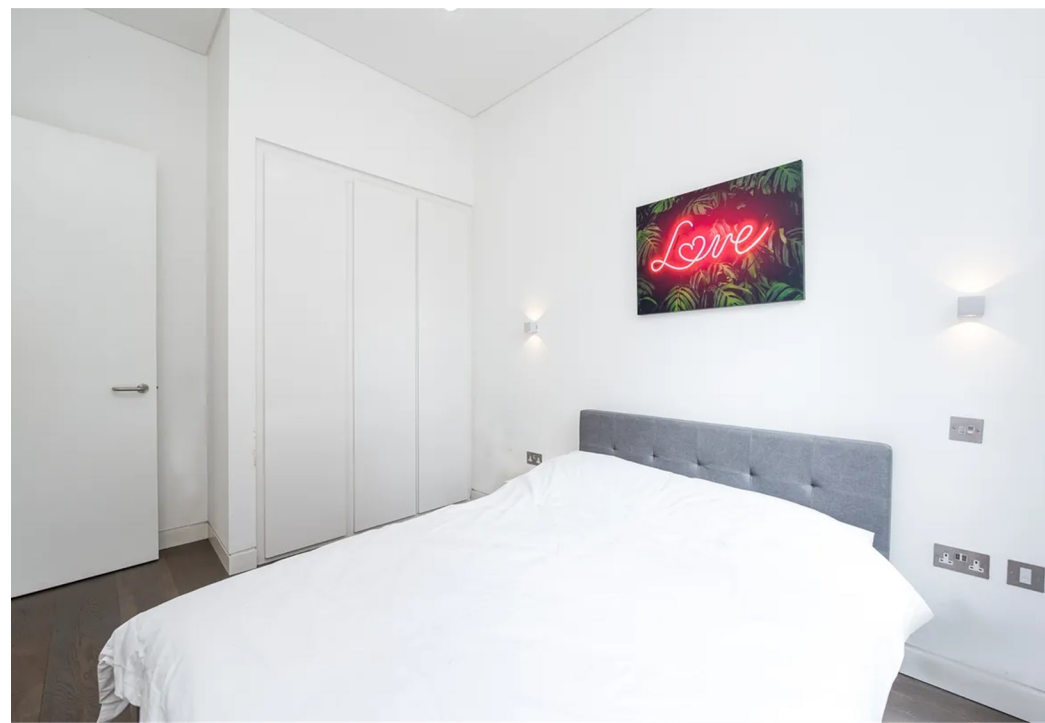
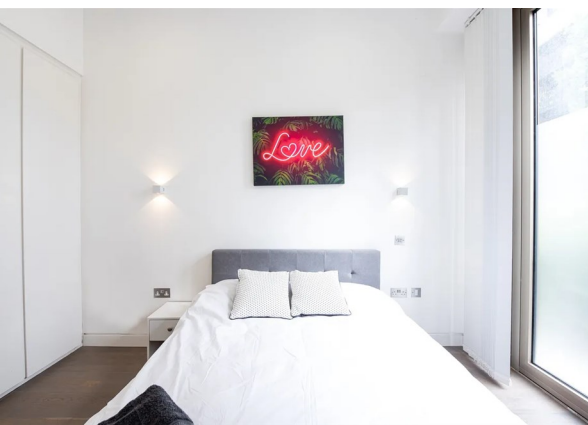
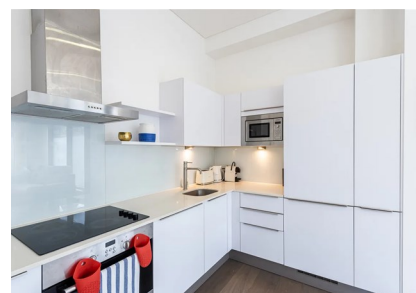
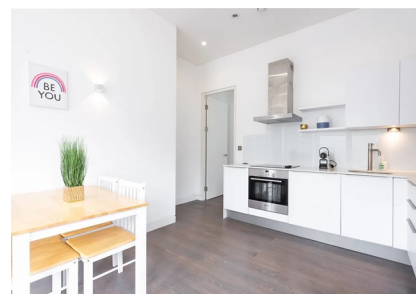


Grange Gardens Haven Way, London, SE1 3FL
£2,800 Per month
EPC Rating: C Council Tax Band: E

STONE



Nestled in the vibrant heart of London, this charming development on Haven Way offers a delightful blend of comfort and convenience. This 2-bedroom flat features two well-appointed bedrooms and two modern bathrooms, making it an ideal choice for professionals, couples, or small families seeking a stylish urban retreat.

As you step inside, you are welcomed by a spacious open-plan layout that exudes warmth and character, perfect for entertaining guests or enjoying quiet evenings at home. The layout is thoughtfully designed to maximise space and light, creating an inviting atmosphere throughout.

The location of this property is truly exceptional. Haven Way is situated in a lively neighbourhood, surrounded by an array of local amenities, including shops, cafes, and parks. With excellent transport links nearby, you will find yourself just moments away from the bustling city centre, allowing for easy access to all that London has to offer.



Percy House,
33-34 Gresse Street,
London
W1T 1QU
020 7043 8888
Lettings@stone.london

