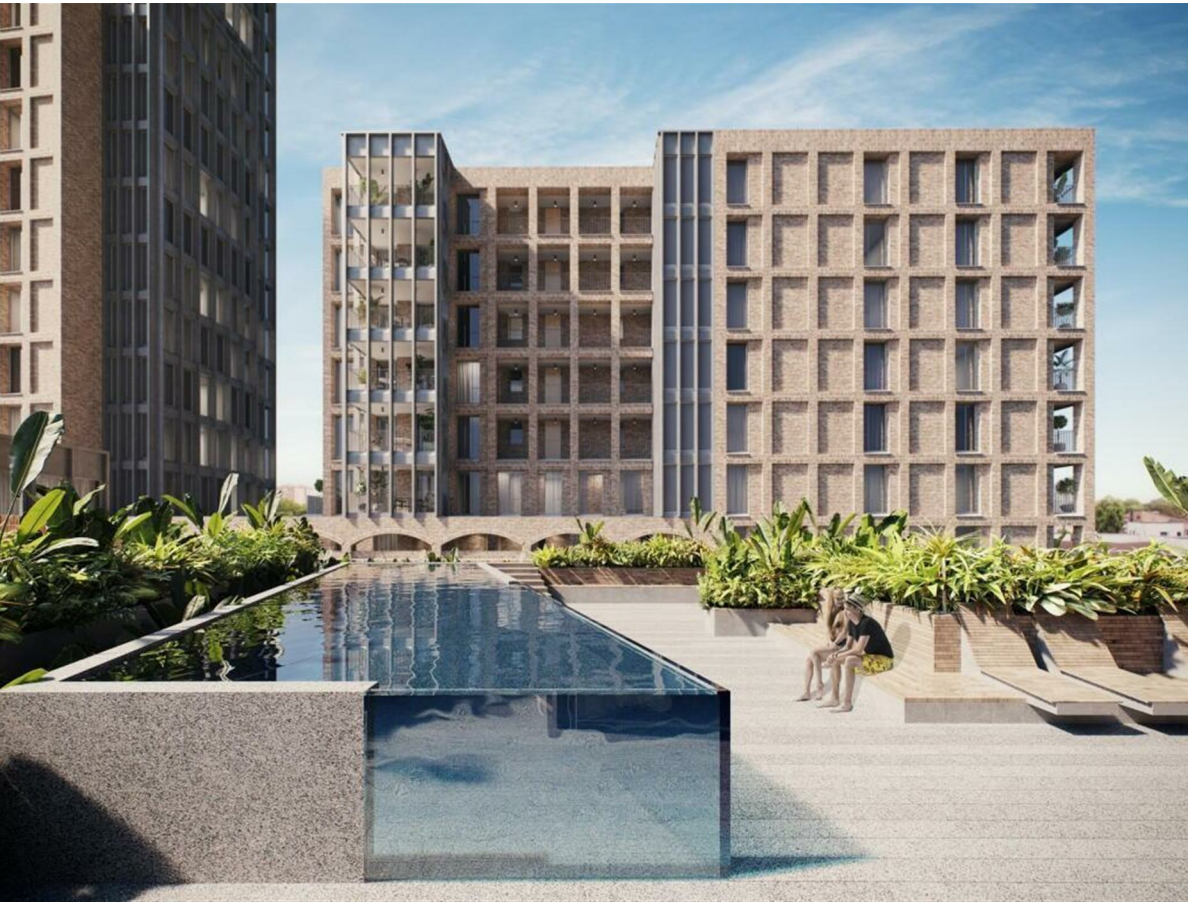


Parkhaus Maple Path, London, E5 8FD
£4,250 Per month
EPC Rating: Council Tax Band: E



Nestled in the charming area of Mapple Path, London E5 8FB, this modern flat offers a delightful blend of comfort and contemporary living. Spanning an impressive 1,010 square feet, the property boasts three well-proportioned bedrooms, making it an ideal choice for families or those seeking extra space.

The flat features a spacious reception room that invites natural light, creating a warm and welcoming atmosphere. With two stylish bathrooms, convenience is at your fingertips, ensuring that morning routines and evening unwinding are both effortless and enjoyable.

Built in 2022, this property benefits from the latest in modern design and energy efficiency, providing a fresh and appealing environment for its residents. One of the standout features of this flat is its enviable position facing the park, offering picturesque views and a serene setting for relaxation. Whether you enjoy morning strolls or simply wish to bask in the beauty of nature, this location provides the perfect backdrop.



Percy House,
33-34 Gresse Street,
London
W1T 1QU
020 7043 8888
Lettings@stone.london

